

SCHROEDAHL
we protect your business



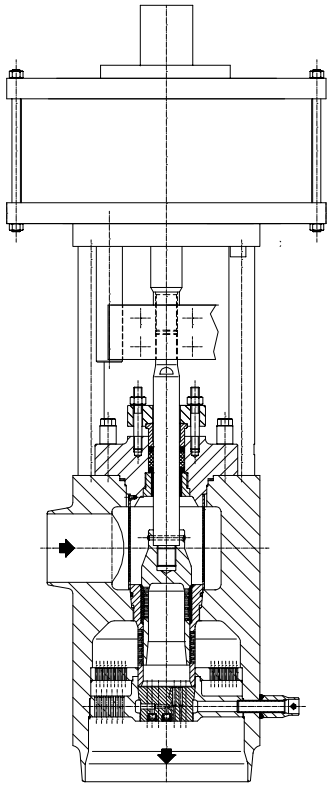
Control Valves

for power plants and process plants

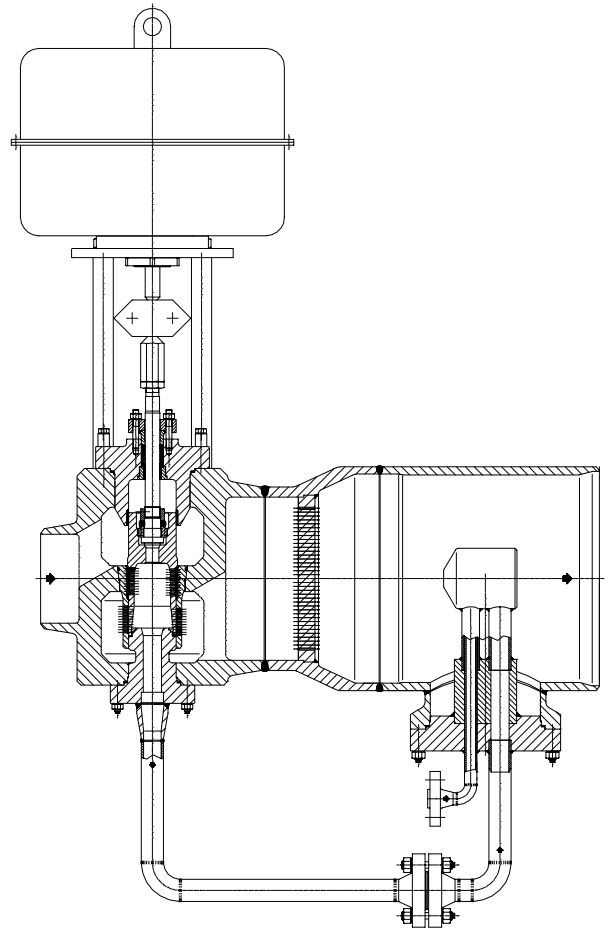


Steam converting valves

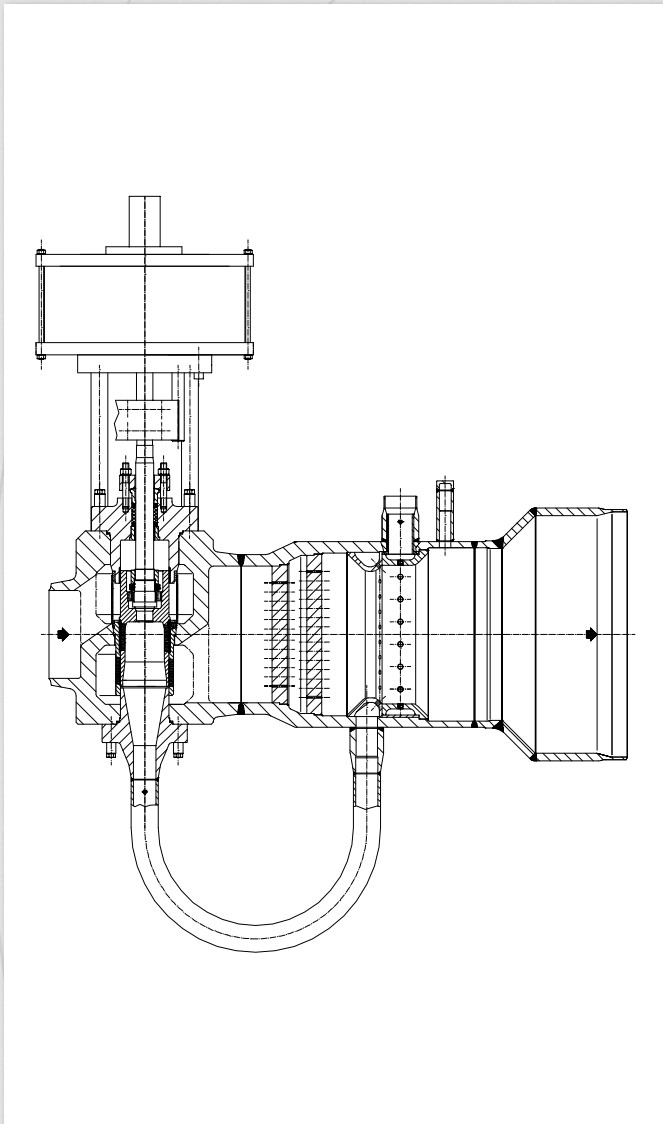
Typical designs



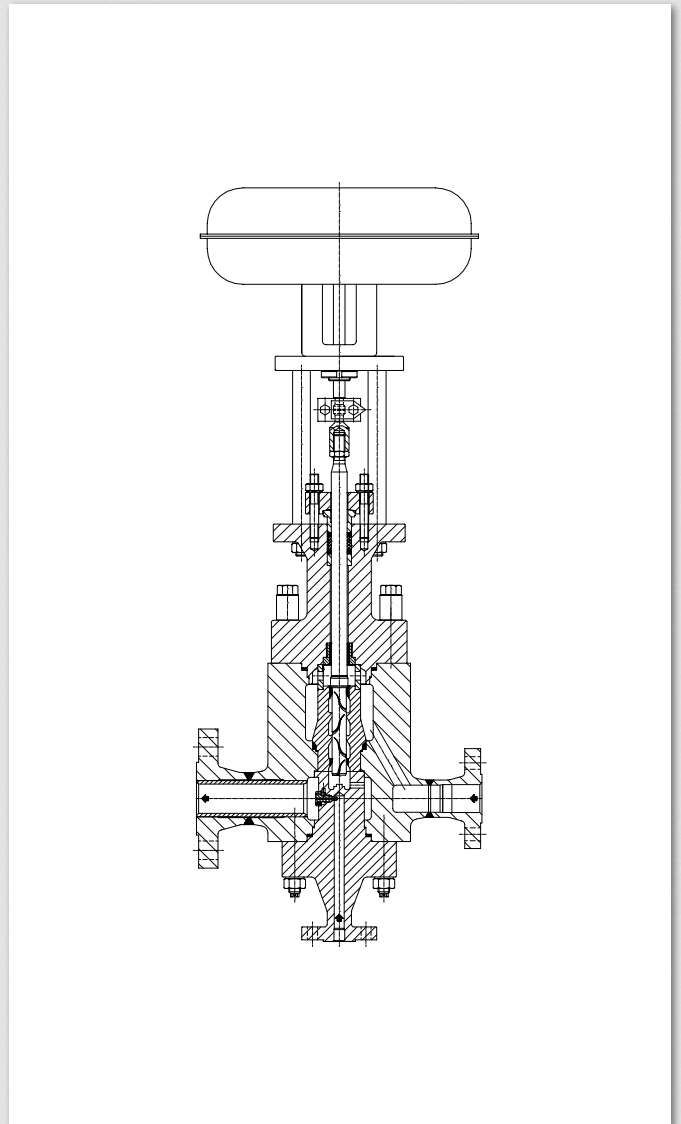
Type DU
Steam converting Control Valve in steam atomizing design, angle valve



Type DU
Steam converting Control Valve in steam atomizing design, globe valve

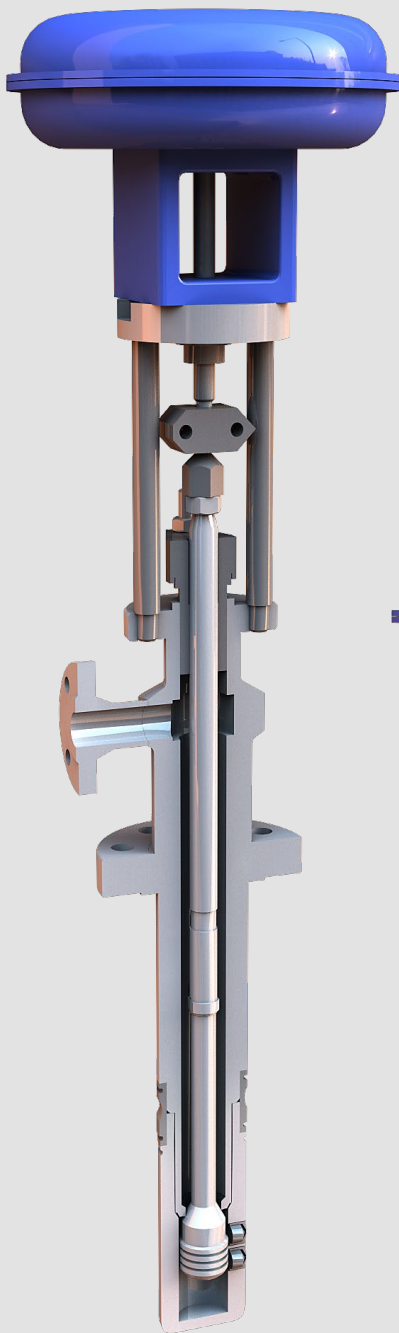


Type DU
 Special design of a steam converting Control Valve
 Ring section injection for large quantities of water

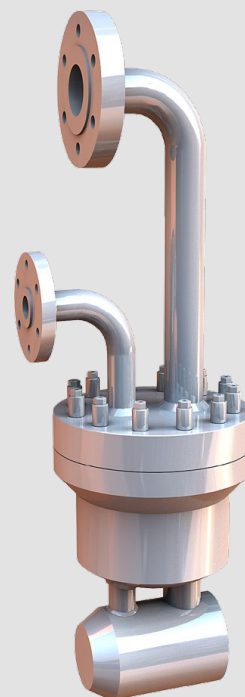
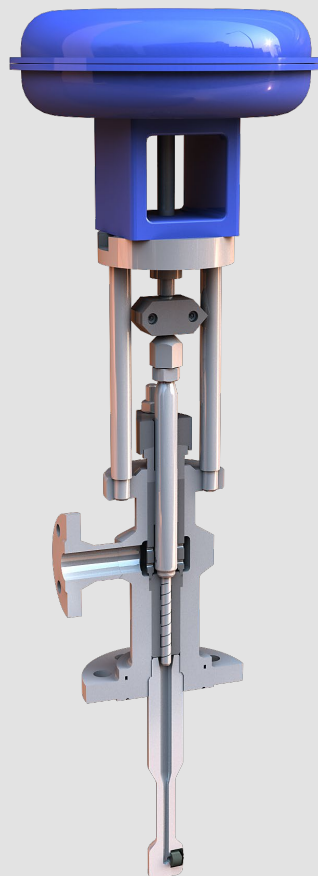


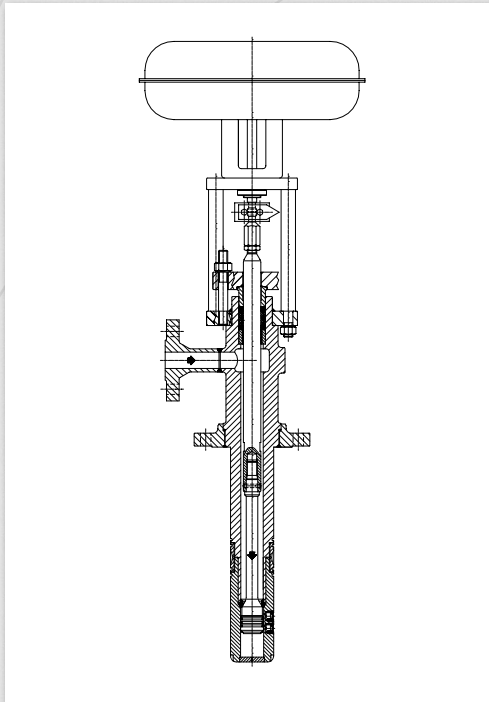
Type DU
 Micro design of a steam converting Control Valve for very small amounts
 of steam and water.

Steam cooling

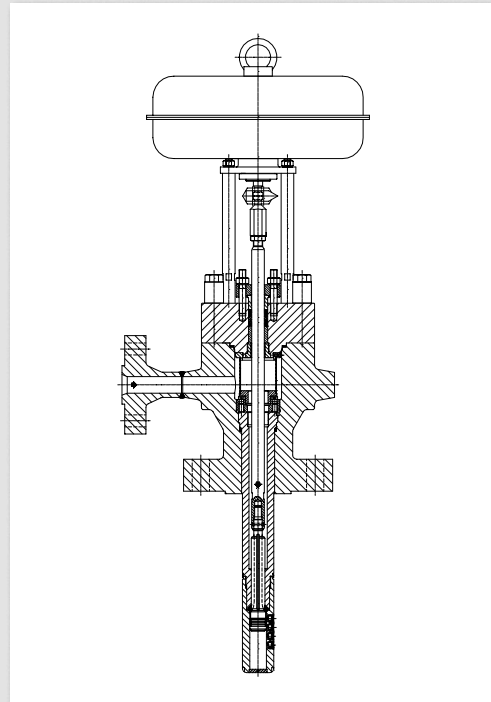


- For specific requirements of temperature control in industrial power plants and in the processing industry
- Spray head with integrated high performance injection nozzles. Special characteristics. Tight closing metal seat.
- Easy installation in every pipeline \geq DN 80 pressure rating PN 10-400/150 lbs- 2500 lbs
- Customised / special solutions are possible

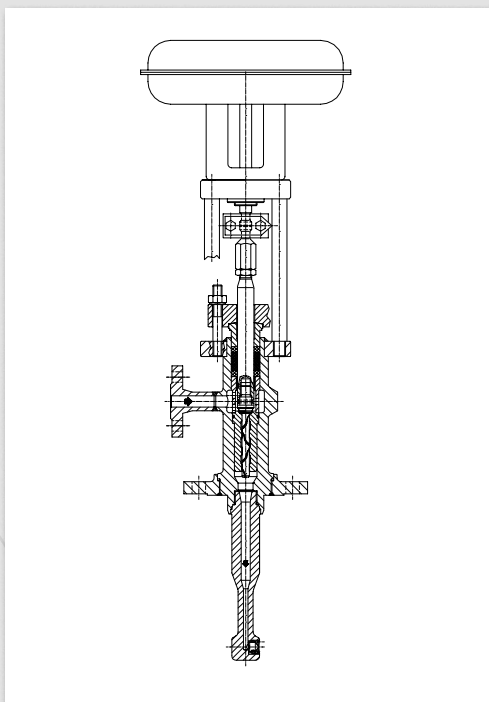




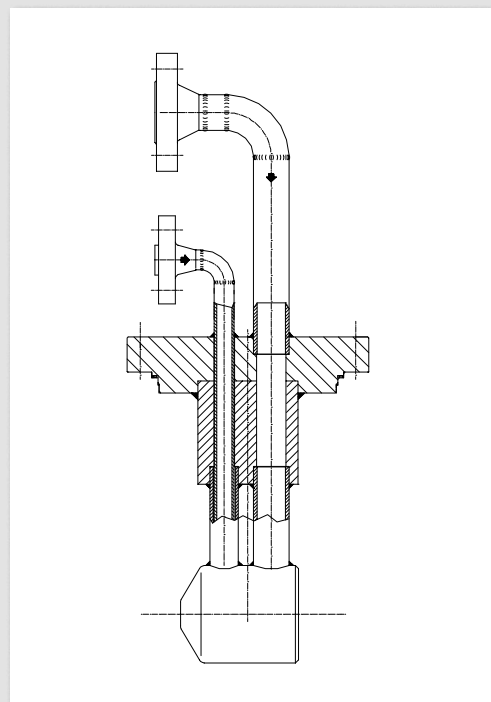
Type DKV
 Steam attemperator in standard design
 (\leq PN 250 / \leq 1500 lbs)



Type DK
 Steam attemperator in high pressure design
 ($>$ PN 250 / $>$ 1500 lbs)



Type DKV-M
 Steam attemperator in micro design



Type DKT
 Steam attemperator with steam atomizing system

Control Valves for feed water, cooling water and pump protection control

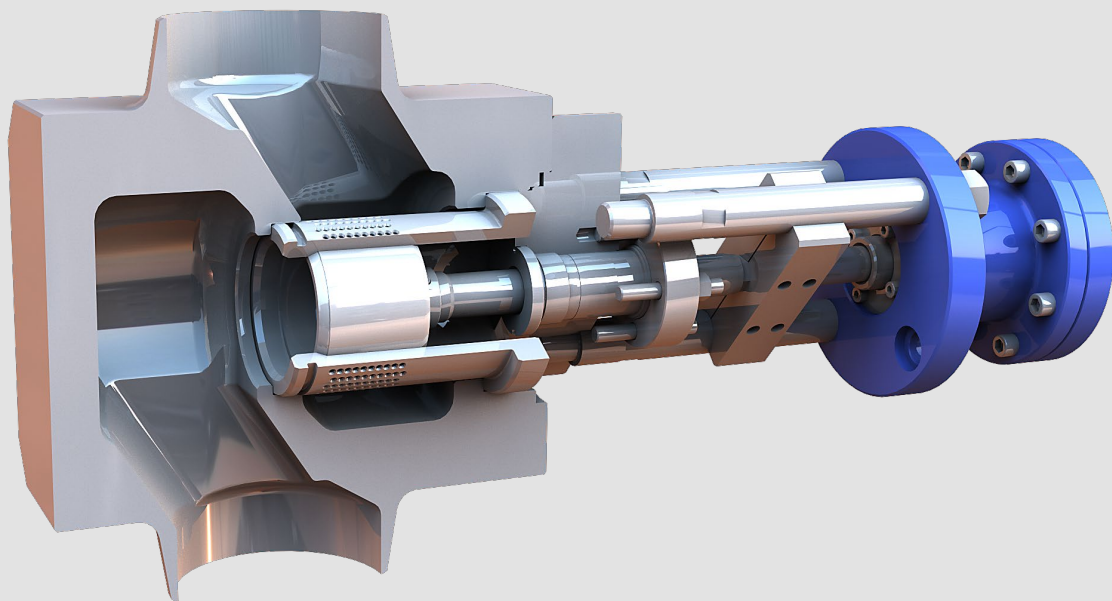
SCHROEDAHL cooling water and feed water Control Valves represent high precision work.

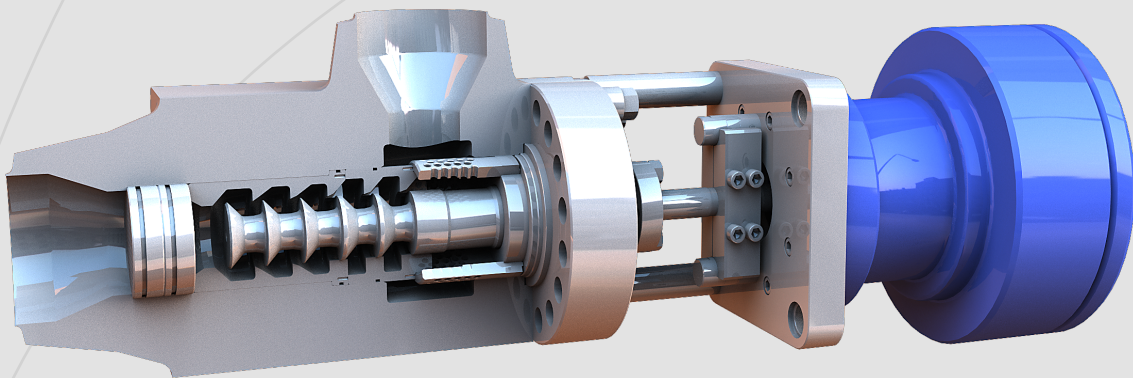
SCHROEDAHL offers various high-quality cooling water and feed water valves for clean water applications in industrial or power plant processes. The forged housings as globe-, z-, or angle valves are configurable in various nominal sizes and pressure ratings.

Besides the feed water valve with single operation, SCHROEDAHL has an innovative feed water combined valve, which has two functions in one system – for example the control of the start-up and the main load case. Thereby, the time and effort of installing a plant and mainly the costs can be reduced.

The SCHROEDAHL cooling water Control Valves are conceived as space saving, compact valves for injection and temperature control. The optimised mechanics reduce the necessary operating forces to a minimum, thereby, smaller, cost-saving actuators can be used. Even here SCHROEDAHL adds to a higher economic efficiency.

As a result of the construction style of the SCHROEDAHL Control Valves, they can also operate as high-quality pump protection Control Valves.



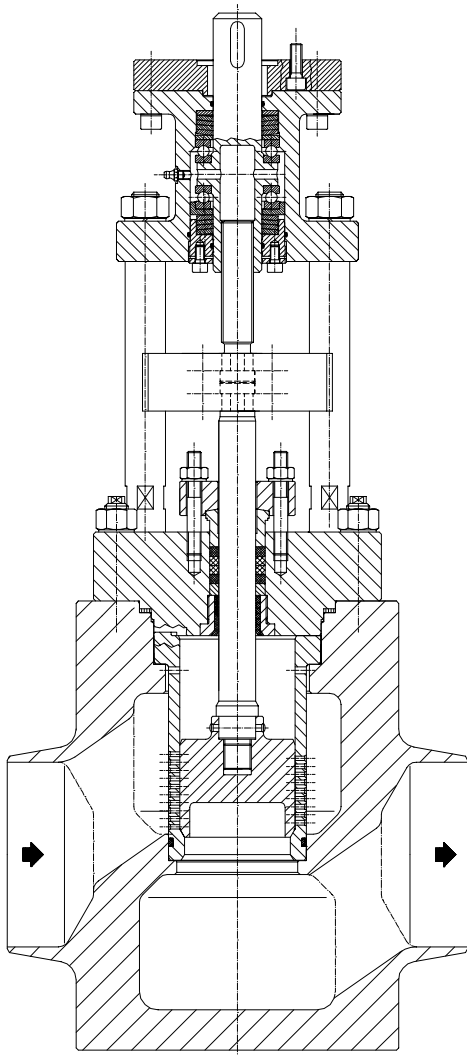


- For regulating minimum and main feed water volumes. A special design can also be used as a start-up valve.
- Globe valve, angle valve or z-valve, butt weld ends or flanges (conforming to EN 1092-1, ASME)
- Perforated trim design, single and multistage, or vortex trim design, in balanced or not balanced construction, DN 15 up to DN 500/DN ½" to 20", all pressure ratings are available

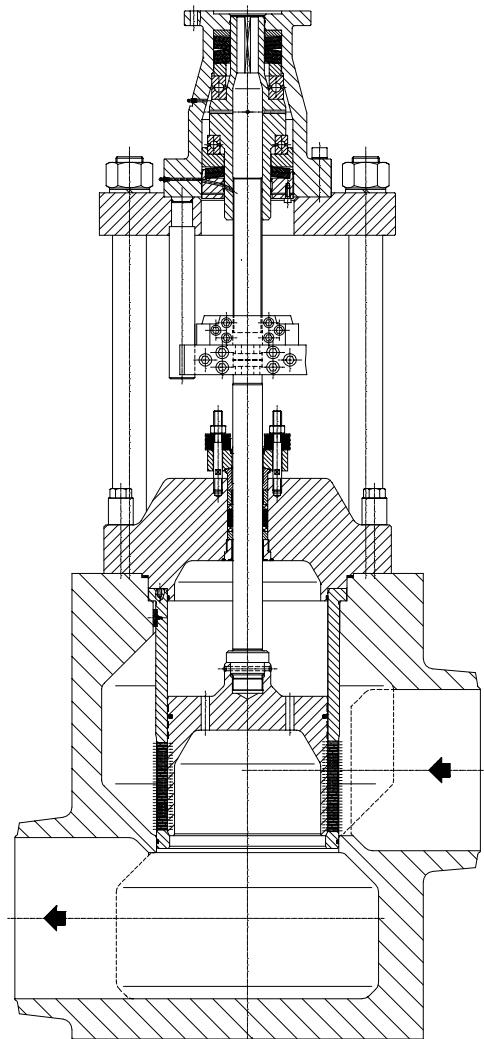


Feed water-, cooling water- and pump protection Control Valves

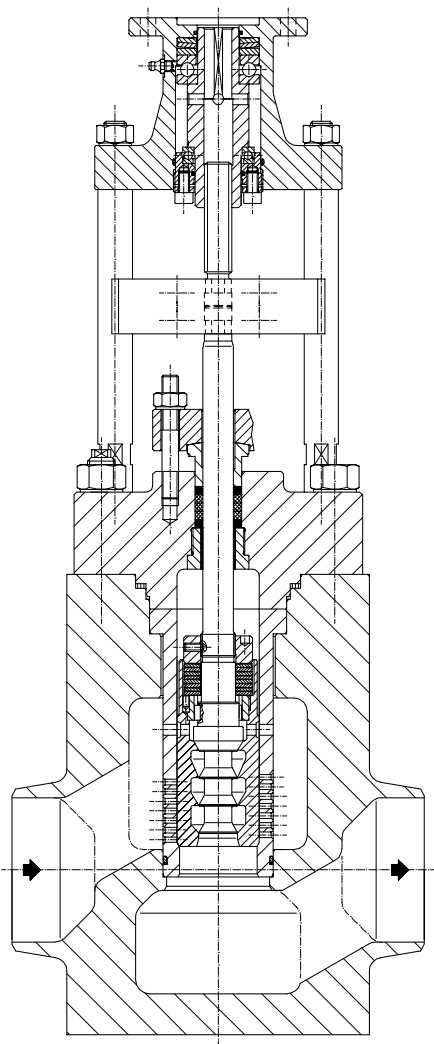
Typical designs



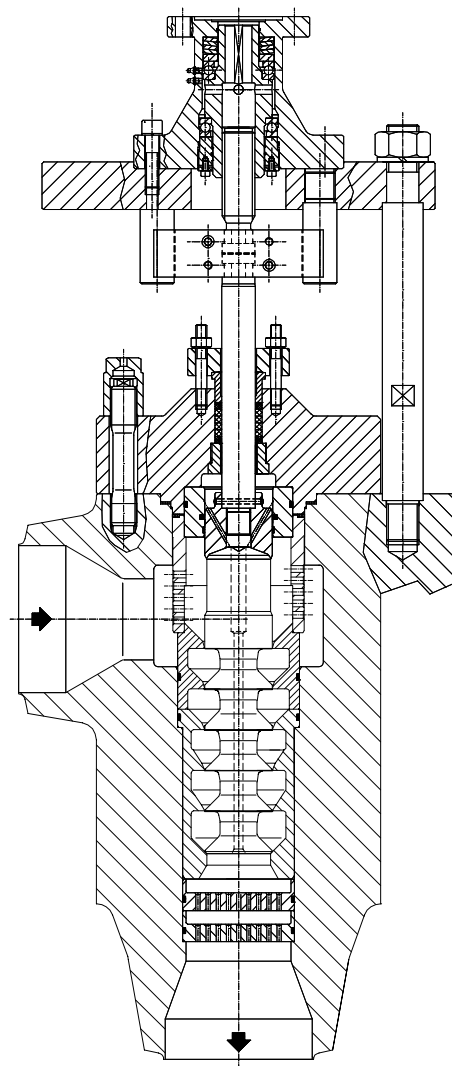
Type BV
Feed water Control Valve, globe valve



Type ZV
Feed water Control Valve, z-valve



Type BV
Feed water combined Control Valve for start-up and full load operation



Type AC
Feed water start-up Control Valve can also be used as a minimum flow Control Valve for pump protection

State-of-the-art steam pressure reduction

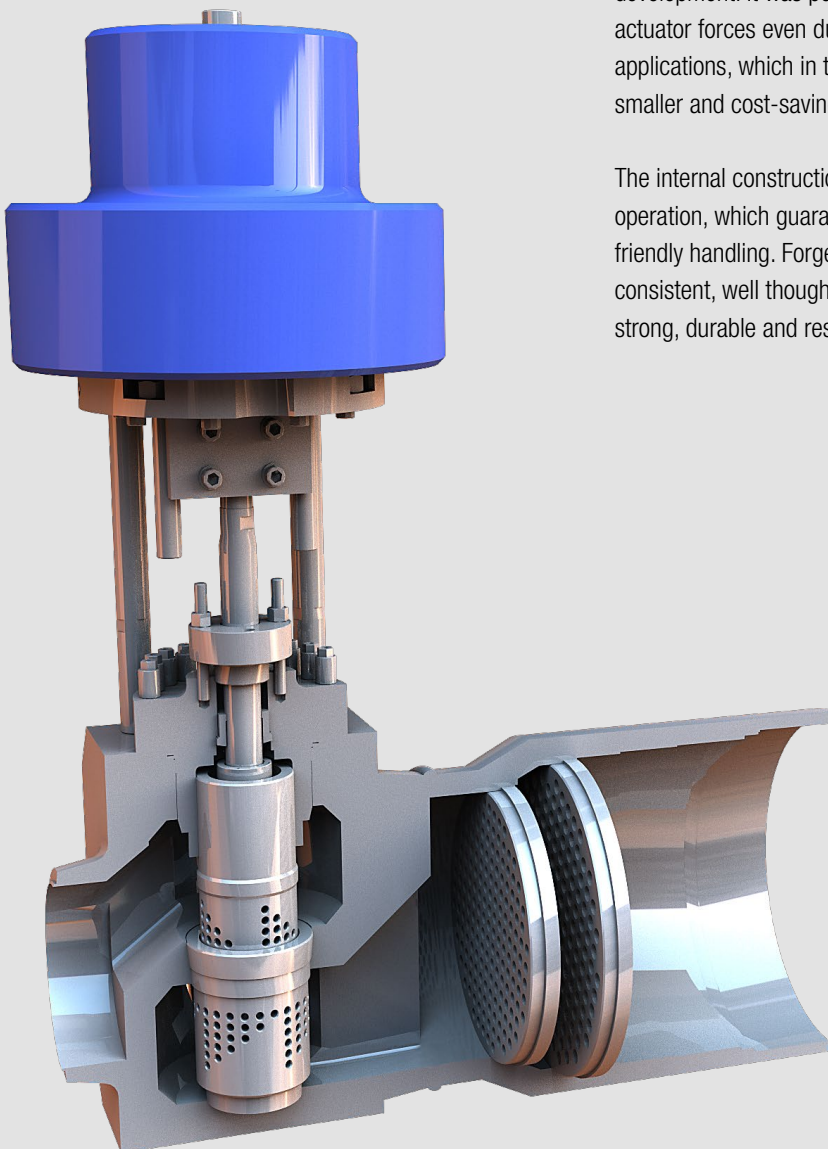
SCHROEDAHL develops, manufactures and supplies high quality and individually configured steam pressure reduction valves.

We develop steam pressure reduction valves, which are precisely adapted to the requirements in power plant- or industrial processes. The single or multistage solutions SCHROEDAHL provides cover all pressure ranges (high, medium, low), all installations (globe valve, angle valve, or z-valve), as well as all nominal sizes (up to DN 1000/40" and higher).

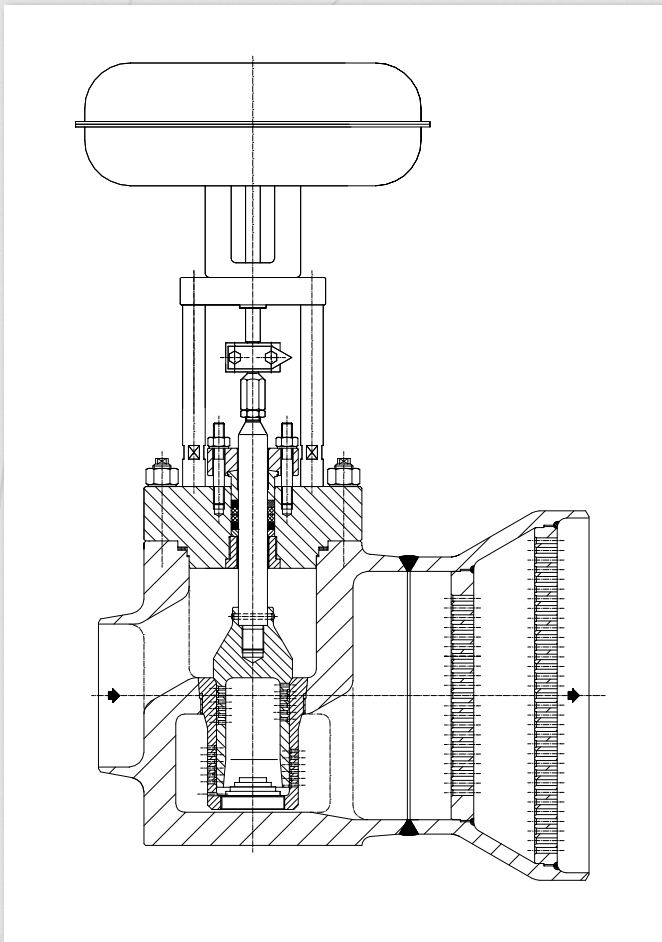
Thereby, we are able to supply you - on the basis of your process data - with customised Control Valves for an optimised operation of your system. You can benefit from our extensive experience and engineering at the highest level.

The SCHROEDAHL steam pressure reduction valves are high-quality products, which are completely optimised in their operation through a continuous development. It was possible to minimize the actuator forces even during high pressure applications, which in turn leads to the use of smaller and cost-saving actuators.

The internal construction is designed for low noise operation, which guarantees environmentally-friendly handling. Forged housings combined with a consistent, well thought-out engineering ensures a strong, durable and resistant quality.

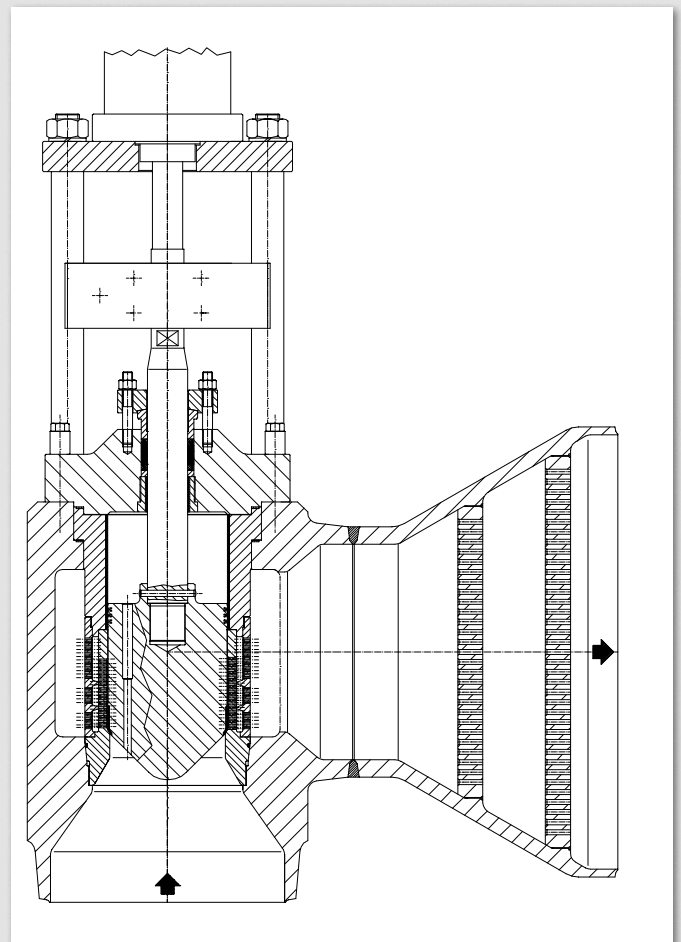


Typical designs



Type DR
Steam pressure reduction valve, globe valve

- For industrial plants and power plants, where medium flows such as water and steam must be controlled
- Forged, casted or welded housings, globe valve or angle valve, butt weld ends or flanges (EN 1092-1, ASME and other standards)
- Possibilities from DN 25 - 1200/1" - 48"
- Customised/special solutions are possible



Type DR, DW
Steam pressure reduction valve, angle valve

Customised solutions for special applications

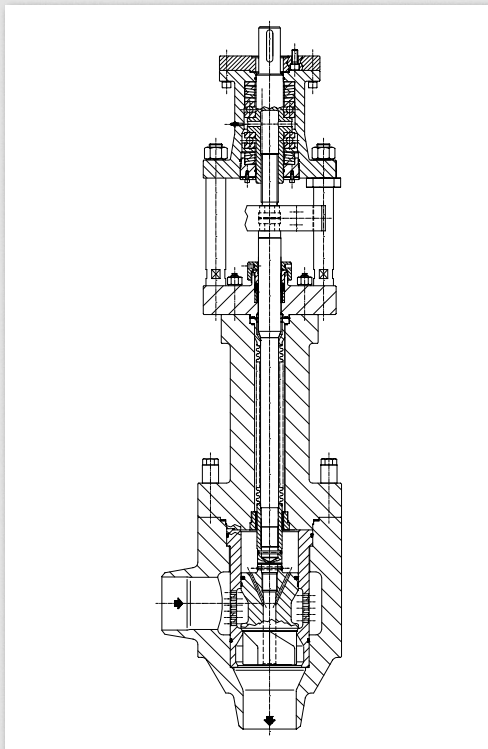
SCHROEDAHL develops Control Valves for every application – even if the requirements are far beyond the standards.

Special requirements demand special solutions. On the basis of decades of development, SCHROEDAHL has various products for various special applications. Specific safety requirements often come first, especially in nuclear power plants or in the chemical industry.

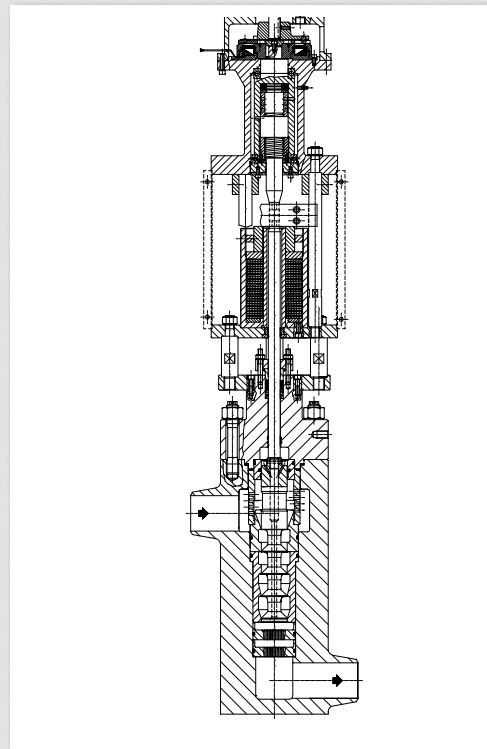
We are responsible for detailed engineering, the processing of special materials and certified, high-quality manufacturing. We add to the realization of the highest safety standards.

- For all plants, where additional safety requirements for environmental protection must be considered (nuclear standards or other specifications)
- All types of housing designs are possible, but weld ends
Flanges (conforming to EN 1092-1, ASME)
- Bellows sealed with additional downstream stuffing box. Single and multistage trim. Suitable for gases and liquids.

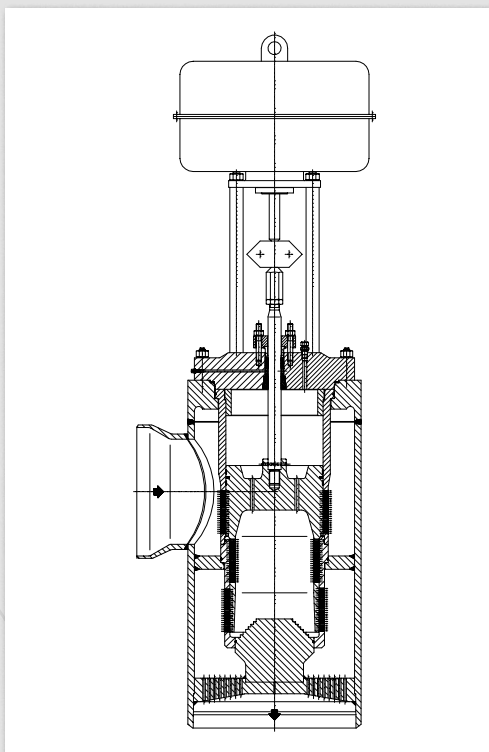
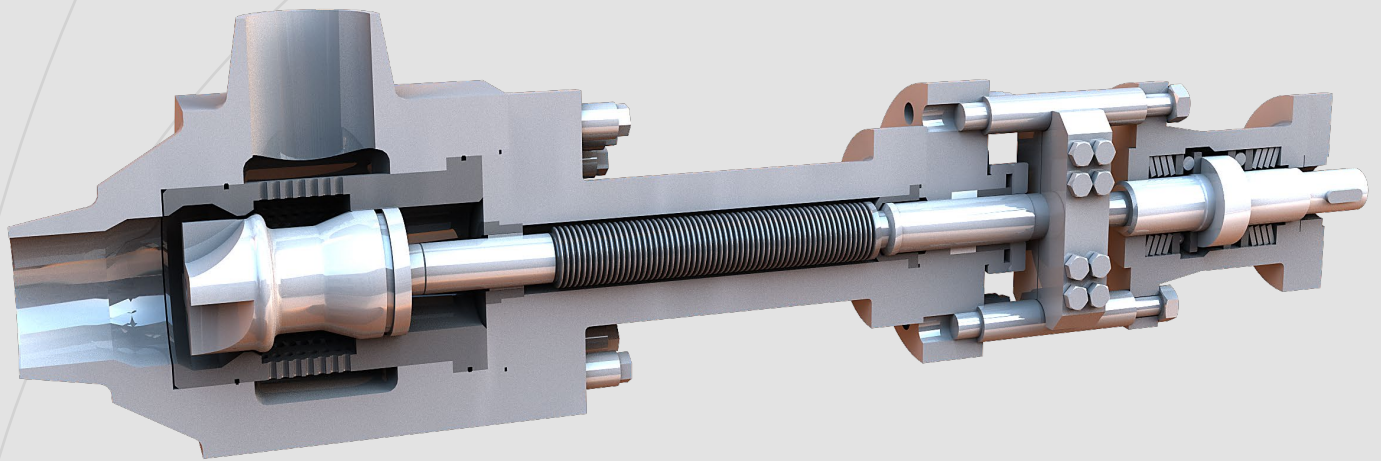
Typical designs



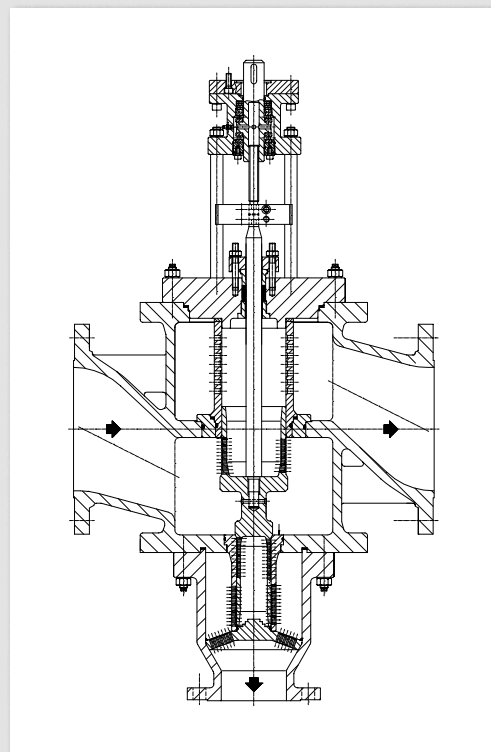
Type AKA
Specialty valve with bellows sealed technology



Type AC
Minimum flow Control Valve with safety function for electrical actuators



Type AV
Condensation Control Valve, welding construction



Type DK
3-way Control Valve,
special construction with multistage bypass trim